



ZIMMER+ROHDE



Destinations | Collection Spring 2018

This year, the *Zimmer + Rohde* collection chronicles the fascination of travel. Following the footsteps of Marco Polo and Alexander von Humboldt, we set off on an expedition around the globe of the 21st century to discover the amazing variety of different places and cultures on our planet. Along our journey, we drew inspiration from exotic colour combinations and unusual shapes, shedding new light on the old and familiar. Globetrotters like to bring home mementos of their travels so that they can revisit that feeling of adventure in their everyday lives. In that same spirit, we have created designs that allow you to travel the world and admire its wonders from inside the comfort of your own home.

Our new spring collection brings together the loveliest colours, patterns and handcrafting techniques from all across the globe. Some of these fabrics feature graphic designs made using high-resolution digital printing technology. Others boast original handcrafted looks, and were created in the world's finest factories. *Geo*, for instance, with its lavish diamond pattern, is a sophisticated textile that simultaneously recalls traditional patterns of bygone cultures and recreates the geometric clarity of modern urban

architecture, with a bold colour combination of clear turquoise and silver-grey. *Cosmopolitan* pays homage to the world of high art; its digital-print graphic pattern in a proud mix of colours – deep midnight blue, orange, pink, zinc yellow and platinum grey – applied to an especially densely woven cotton satin recalls the work of the Russian avant-garde. Meanwhile, meticulously applied and brightly coloured allover embroidery on *Festival* transports you to the pulsing beaches of Latin America, where you can admire the waves and lose yourself in lively waterside music. *Atlas*, however, conveys the calm of untouched mountain landscapes. Its modern digital collage print against a relaxed linen satin backdrop combines marble structures with landscape silhouettes in warm, earthy shades to convey a sense of Nordic elegance. Each fabric in this collection is a valuable souvenir of our global wanderings that harmoniously blends into the rooms of your home, yet tells its very own story – one recognizably penned by *Zimmer + Rohde*.



ZIMMER+ROHDE

Destinations | Collection Spring 2018

Ocean | 10735

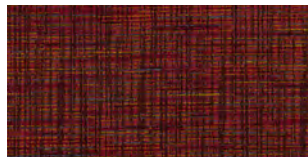
15 Colourways
56% Viscose, 28% Cotton,
8% Linen, 5% Polyester,
3% Acrylic
32.000 Martindale
Width: 145 cm



The depth and intensity of the colours on this heavy chenille fabric create a truly special look. These are achieved through a vivid woven structure of multicoloured yarns in a striking mix of shades.

Play | 10736

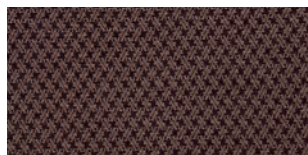
26 Colourways
47% Polyester, 22% Viscose,
16% Cotton, 10% Linen,
5% Acrylic
30.000 Martindale
Width: 145 cm



Play impresses with a lively blend of colours that creates a pleasant atmosphere in any room. It can be seamlessly integrated into all kinds of colour schemes. A special stain-resistant finish makes this vivacious fabric an uncomplicated, versatile choice.

Lodge | 10737

15 Colourways
45% Viscose, 22% Polyester,
17% Cotton, 13% Acrylic,
3% Linen
30.000 Martindale
Width: 145 cm



The Far Eastern look of this weave is created using matte bouclé yarns on an elegant, finely threaded warp. This fabric's decorative yet subdued Jacquard pattern makes it well suited for combination with seating arrangements both small and large.

Alito | 10738

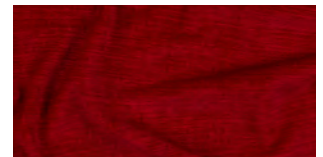
20 Colourways
100% Polyester CS
Width: 330 cm



This very softly flowing, room-height and transparent single-colour fabric has a thoroughly elegant look, thanks to its shimmery, satiny front side. It is also extremely pleasant to the touch. This low-maintenance fabric is 100 per cent made of Trevira CS and suitable for use in private homes as well as public buildings.

Champ | 10739

29 Colourways
100% Polyester
90.000 Martindale
Width: 145 cm



This casual yet elegant upholstery fabric with a velvety soft feel and a lively blend of colours is extremely durable and easy to care for, thanks to its special finishing. It is washable, and any small stains that may accumulate on its surface are easy to quickly remove. This makes *Champ* an excellent choice for homes with small children.

Its broad colour palette opens up a range of opportunities for custom interior design concepts.

Tajo | 10740

6 Colourways
63% Cotton, 24% Acrylic,
13% Polyester
Width: 310 cm



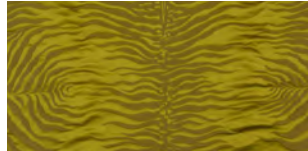
Various yarns made with the help of innovative spinning methods are processed into an expressive bark-like structure for *Tajo*. The completed fabric is submitted to a gentle crash process as a final step in order to underscore its handcrafted, natural look and feel. We recommend selecting a cut that extends down to the floor of the room.



ZIMMER+ROHDE

Wildlife | 10741

8 Colourways
66% Cotton, 34% Silk
Width: 140 cm



Wildlife is a surprising combination of premium materials, a classic animal design and strong colours. Like a magnificent feline predator slinking in from a far-off jungle, this fine satin and cotton blend makes a confident, charming and elegant statement in the room.

Burma | 10744

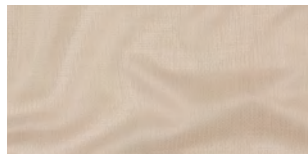
3 Colourways
49% Cotton, 36% Linen,
15% Polyester
Width: 150 cm



Burma has an enigmatic metallic gleam, like an antique artefact unearthed from southeast Asia. A subtle Scherli pattern underscores the unique character of this cotton-linen blend. This work of textile art is the product of masterful Italian manufacturing. It was developed for us with the help of innovative weaving and dyeing techniques. This is a fabric for true connoisseurs!

Chill Out | 10742

16 Colourways
63% Acrylic, 37% Polyester
Width: 330 cm



This room-height transparent fabric impresses with its fine lattice-work structure that recalls delicate mesh. It contains refined yarn blends in soft colours that create a natural, lively look.

Marco Polo | 10745

6 Colourways
Ground: 85% Polyester,
9% Cotton, 6% Linen
Embroidery: 100% Viscose
Width: 140 cm



This decorative fabric is truly captivating – its appearance changes depending on the way it catches the light. Its surface features unusual all-over embroidery and shimmers enticingly. Alternating stitching directions form a lavish checkerboard pattern.

Bagan | 10743

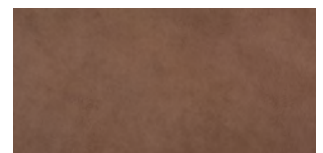
3 Colourways
49% Cotton, 36% Linen,
15% Polyester
Width: 150 cm



This expressive linen fabric embodies a form of textile craftsmanship that has grown rare. It was made by spinning natural linen and cotton yarns into stark horizontal stripes. Its dense sections were then enhanced with the addition of a subtle Jacquard pattern. Last but not least, a fine metal layer was applied, then partially rubbed off again during the refinement process. All in all, this is a complex manufacturing process that creates a unique and highly elegant vintage look.

Map | 10746

15 Colourways
100% Polyester
25.000 Martindale
Width: 140 cm



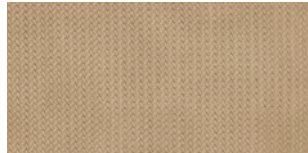
Map rounds out the synthetic leather trio with a natural suede look. Every diva will love this soft and supple fabric – it pairs wonderfully with bold and striking textiles.



ZIMMER+ROHDE

Costa | 10747

15 Colourways
Ground: 100 % Polyester
Coat: 95 % Polyvinylchloride,
5 % Polyurethane
35.000 Martindale
Width: 137 cm



Thanks to its refined mesh structure, *Costa* has a more 'grown-up' appearance than its synthetic leather counterpart *Havana*, which also makes it far more versatile. However, both types of fabric are equally easy to incorporate into interior design.

Lagoon | 10750

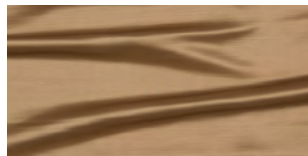
6 Colourways
38 % Polyester, 33 % Cotton,
29 % Viscose
Width: 140 cm



Lagoon has a contemplative feel, like the surface of a body of water shimmering in moonlight. The soft, horizontal rhythm of the pattern evokes the polished surface of a precious gem, enriching interiors with a sense of balance and elegance.

Aristo | 10748

18 Colourways
100 % Polyester CS
Width: 300 cm



This shiny satin fabric boasts an extraordinary texture consisting of stitching with varying thicknesses, and comes in an elegant colour palette. This double-wide fabric is 100 per cent made of Trevira CS and suitable for use in private homes as well as public buildings.

Sphere | 10751

7 Colourways
74 % Polyester, 26 % Viscose
Width: 138 cm



This softly flowing satin boasts an elegant handcrafted look. Refined all-over patterning looks like dense embroidery against the sophisticated surface. This design evokes Indian textile artistry.

Cosmopolitan | 10749

5 Colourways
100 % Cotton
Width: 150 cm



Cosmopolitan has a clear, elegant and confident look. A precise digital printing technique was applied to this fabric, extending a highly graphic motif across the finely threaded, dense and softly draping cotton satin. The colour distribution and the proportions of the sections evoke Russian avant-garde art as well as urban design in major cities.

Westend | 10752

12 Colourways
Ground: 100 % Cotton
Flor: 100 % Viscose
30.000 Martindale
Width: 142 cm



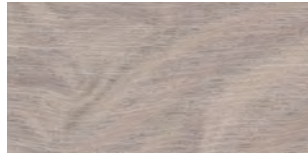
The elegant, shimmery velvet motifs that lie on the clear, matte background of the *Westend* upholstery fabric look like cut and set precious gems. This fabric's graphic all-over design has a particularly vivid effect, thanks to the combination of velour and flat woven fabric – the result of a meticulous production process.



ZIMMER+ROHDE

Alanis | 10753

20 Colourways
100% Polyester CS
Width: 310 cm



This light decorative fabric with a horizontal weave is suitable for use in private homes as well as public buildings. Woven from low-maintenance Trevira CS, its irregular Jacquard texture and matte, shimmering surface lend it a natural and elegant appearance. This look is underscored by the lively colours of the various yarn blends in its weave.

Atlas | 10756

3 Colourways
100% Linen
Width: 155 cm



An abstract landscape motif evokes untouched mountain scenery. This fabric features a modern digital print on relaxed linen satin; collaged marble structures with soft silhouettes in warm, earthy shades convey Nordic elegance.

Geo | 10754

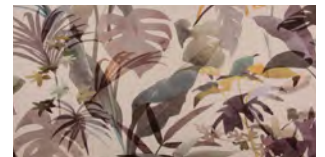
4 Colourways
37% Viscose, 25% Linen,
22% Polyester, 16% Acrylic
Width: 137 cm



Geo impresses with an exciting combination of geometric clarity and textile sophistication. The lavish interplay between the colourful lines and the vivid relief effect inside the diamonds creates a delicate illusion of depth. Clear geometric patterning lends this fabric a traditional look reminiscent of ethnic textiles as well as a special charm that evokes modern urban architecture.

Paradiso | 10757

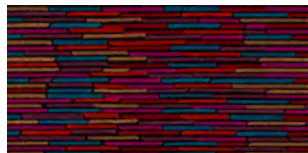
7 Colourways
100% Linen
Width: 150 cm



Paradiso speaks to lush tropics and opulence. Imaginative water-colour-style leaf motifs are layered over one another like plants in a jungle. Whether it is placed against a light or a dark backdrop, this relaxed linen print makes a strong statement at your window.

Festival | 10755

4 Colourways
Ground: 100% Cotton
Embroidery: 100% Viscose
Width: 148 cm
Usable Width: 139 cm



Meticulous all-over embroidery creates a feast of colours bound by gorgeous textile artistry. Slight irregularities between the individual motifs caused by variations in stitching density lend *Festival* a unique aura. The pattern has a sketched look that takes on a life of its own every time the fabric moves – it looks like a blurred, colourful reflection of the surface of a body of water.

Borneo | 10758

3 Colourways
100% Polyester
Width: 313 cm



This latticework fabric with a handmade look consists of multi-coloured moiré yarns and impresses with a surprising transparent effect when it is held against the light. This lends an elegant heaviness to the room's atmosphere while keeping the area at the window relatively bright.

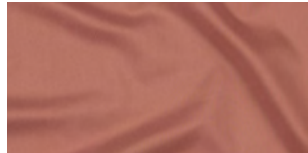
We recommend selecting a cut that extends down to the floor of the room.



ZIMMER+ROHDE

Colon | 10759

30 Colourways
100% Polyester
Width: 300 cm



This lightweight and softly flowing single-colour decorative fabric makes for excellent lining material. Its matte front side has a natural, subdued look that pairs wonderfully with modern linen, cotton or satin fabrics.

Meanwhile, its reverse side has a gleam to it that looks lovely against elegant window decorations.

Jakarta | 10760

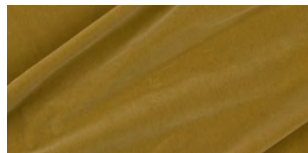
5 Colourways
81% Polyester, 19% Cotton,
16% Acrylic
Width: 310 cm



This room-height decorative fabric features a washed-out colour effect that recalls the patinas that form on old walls. It also evokes masterful abstract paintings. Opaque with a slight black-out effect, this Jacquard fabric is well suited for airy, modern window decorations.

Infinity Cotton Feel | 10761

39 Colourways
Ground: 55% Acrylic,
45% Polyester
Flor: 100% Acrylic
50.000 Martindale
Width: 148 cm



This modern velour upholstery fabric impresses with its clear, natural look. It is also highly durable and easy to care for. Made from a blend of modern synthetic fibres, its dry feel and modern-looking, even surface recall natural velveteen.

Infinity Linen Look | 10762

27 Colourways
74% Acrylic, 26% Polyester
Width: 146 cm
Usable Width: 142 cm
30.000 Martindale



This fabric has a linen look that is at once sophisticated and effortless. Thanks to an innovative blend of various high-tech fibres, it boasts a natural-looking texture and modern design, and is also extremely durable and easy to care for.

Lima | 10763

11 Colourways
100% Linen
Width: 290 cm

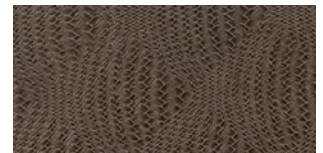


Thanks to a multistage refinement process, this densely woven linen fabric with a relaxed stonewash effect drapes in a way that is extremely soft and flowing. *Lima* has a contemporary, natural look, and comes in 11 sophisticated earthy tones.

We recommend selecting a cut that extends down to the floor of the room for a cool, relaxed aesthetic.

Havanna | 10764

7 Colourways
Ground: 100% Polyester
Coat: 100% Polyvinylchloride
30.000 Martindale
Width: 137 cm



Havanna boasts a fashionable braided look and is made of low-maintenance, durable synthetic leather. This cool and uncomplicated material can be used for many different playful interior designs, from ones in intimate salon interiors to ones in chic hotel lobbies.



ZIMMER+ROHDE

Malaya | 10765

5 Colourways

50 % Polyester, 30 % Linen,

20 % Viscose

Width: 300 cm

Usable Width: 295 cm



Malaya is a lavish printed fabric on a transparent linen blend with intriguing metallic accents. This room-height base fabric features a pleasing, relaxed brushstroke design that recalls light reflected off of desert sand. Its pattern hearkens back to abstract, natural ceramicware.



ZIMMER+ROHDE

Zimmer + Rohde | The Company

Zimmer + Rohde is a family-run company in the fourth generation. It has been creating and marketing high-quality interior textiles for 116 years. Zimmer + Rohde products are available in 50 countries and the company operates its own sales and marketing organisations in 20 of those countries. It owns eight brands and exports 80 per cent of its products.

Zimmer + Rohde is a familyrun company in the fourth generation. It is among the leading textile companies in Europe. The company was founded in 1899 and since then, tradition and experience have been shaping the way it creates and markets highquality interior textiles. The inhouse design department is always on the lookout for the best materials and the best way to implement ideas. It works with weaving mills and printers from all over the world. With a total of eight brands and subsidiaries in New York, Paris, Milan, London, Dubai and Hong Kong, Zimmer + Rohde appeals to people all over the world with its high quality.